

Bale Transfer Unit from BloApCo



- For use with automatic continuous balers.
 - Exclusive Pull/ Push Action.
- All moving parts above bale conveyor.
 - Convenient, automatic air operation.
 - For any size bale

The new BloApCo Bale Transfer Unit solves the problem of removing finished bales from automatic continuous balers.

Its unique design permits the unit to firmly grasp the bale, pull it forward to "break" it away from the following bale, and push it onto the roller conveyors.

The unit operates fully automatically, and eliminates the need for an attendant to constantly monitor bale production and removal. It is completely self-contained, and only requires an 80 psi air source delivering 5 CFM for operation.

The potential for jamming or malfunction of the unit caused by scrap particles falling into the mechanism has been eliminated by placing all moving parts above bale conveyor level.



BLOWER APPLICATION COMPANY, INC.

N114 W19125 CLINTON DR., P.O. BOX 279

GERMANTOWN, WI 53022

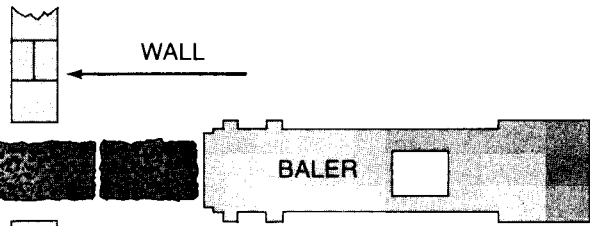
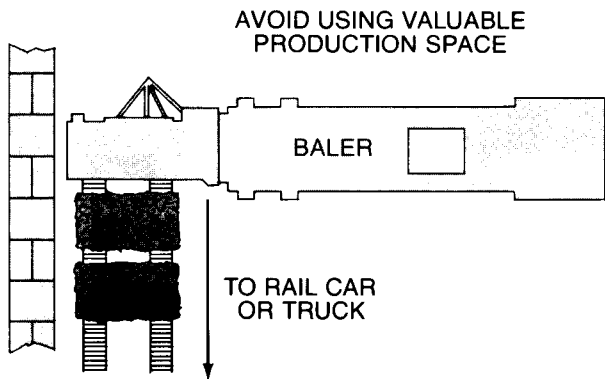
PHONE (414) 255-5580

FAX (414) 255-3446

Application:

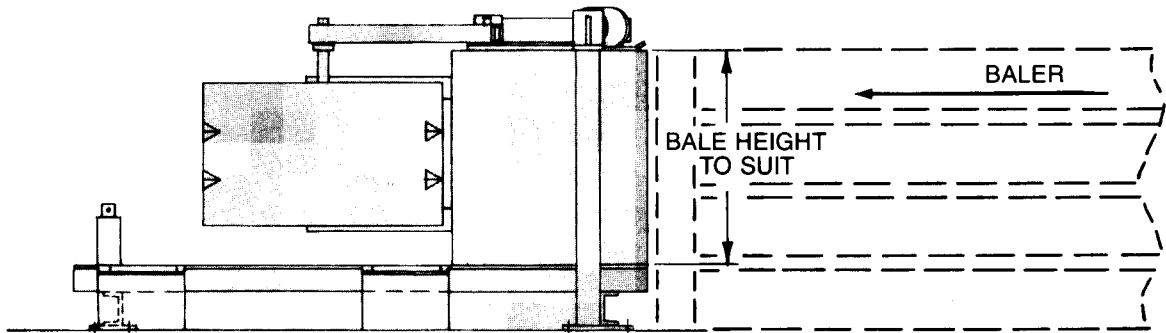
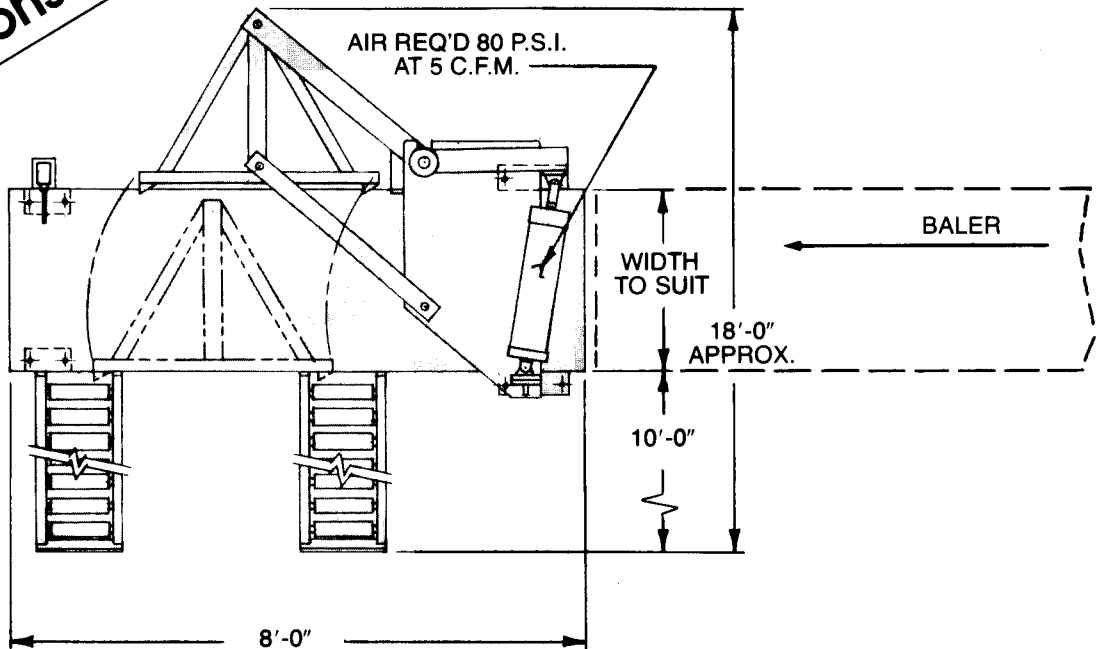


CONTINUOUS BALER



AVOID CUTTING INTO A WALL

Specifications:



BLOWER APPLICATION COMPANY, INC.
 N114 W19125 CLINTON DR., P.O. BOX 279
 GERMANTOWN, WI 53022
 PHONE (414) 255-5580