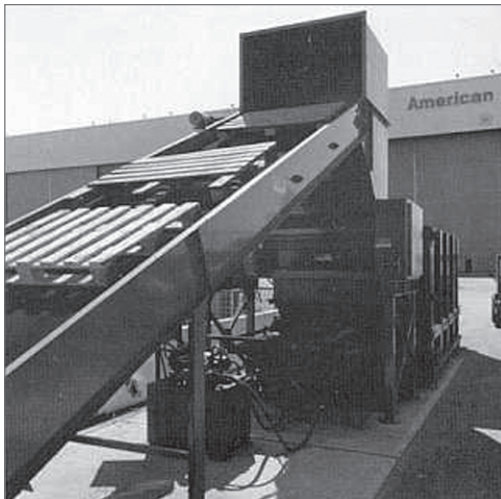


PROBLEM *Airport Trash and Pallet Disposal*

American Airlines at New York's JFK airport faced a major problem disposing of general trash and pallets generated by passengers and foodservice operators. Annual handling and "tipping" costs for removing 3,390 cu. yds. was approximately \$120,000 and, due to a pending increase with higher rates, about to become an \$155,000 annual handling cost. Trash composition was 60% pallets and 40% general materials.

**SOLUTION** *A Top-feed Piggyback Shredder over a Compactor*

American Airlines installed a **BloApCo Model 3CAX-2558VPX top-feed piggyback shredder over an existing compactor**. This extra heavy-duty shredder was chosen because it could readily ingest the large range of small and large parts...and at the same time, have the strength to shred the pallets.



- The shredder reduced pallets to 1/6 of their original volume and the general trash to one-half original volume.
- This dramatic volume reduction from 3,390 cu. yds. to 1,017 cu. yds. reduced hauling costs to \$47,000 resulting in a yearly saving of \$108,000.
- American Airlines was able to realize a 100% return on its investment in just 10 months.

Even though the projected savings were impressive, this project almost didn't get off the drawing board because American Airlines was nearing its budget ceiling for the project. The project was saved when BloApCo's area representative was

able to recondition an old compactor. The system is a straightforward configuration with the shredder placed piggyback over the compactor. It is fed by a 23' infeed conveyor equipped with a built-in safety plate to automatically stop the conveyor and shredder if a 60-80 lb. weight is placed on the conveyor.

American Airlines, JFK Airport, New York City, NY