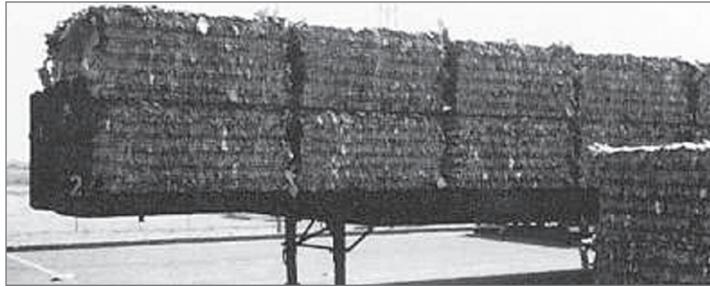


**PROBLEM*****Distribution Center Carton Recycling***

The distribution center for Mervyn's Division of Dayton Hudson in Ontario, CA, generates 112,500 cu. ft. of trash per day, mostly in the form of empty 20" x 30" x 36" corrugated cartons. Their disposal system consisted of a 60" wide conveyor feeding a "big-mouth No Shred" baler which



densified the waste to 1/5 lb. per cu. ft. In order to prevent clogging and keep the system operating, personnel had to be assigned on a full-time basis to stand under the conveyor with long poles and push the cartons into the baler inlet hopper. This was not only inefficient, but also presented a serious personnel safety hazard.

**SOLUTION*****A BloApCo 5-shaft, 58"wide Shredder***

After a year's operation, Mervyn's engineering staff determined that the unsatisfactory system had to be improved. A **BloApCo 5-shaft, 58"-wide shredder** was mounted "piggyback" over the baler. The shredder's unique, patented, slow-speed "**Pierce-and-Tear**" action with teeth specifically designed to handle corrugated material actually "pulls" the 20" x 30" x 36" cartons into the shredder without having to rely on gravity. The shredder effectively tears apart the corrugated cartons to reduce them to smaller, relatively uniform pieces, eliminating clogging in the baler inlet hopper. Mervyn's standard 20" x 30" x 36" carton weighs 2.5 pounds, or 1/5 lb. per cu. ft. The shredded carton when compacted weighs 2 lbs. per cu. ft., resulting in more densified bales.

This baler's capacity for carton scrap was effectively increased by a factor of 10. The revised system operates completely unattended. Once material is tossed onto the conveyor, the next time it is handled, it's part of a 1,500-lb. bale and ready for shipment and recycling.

**Mervyn's Division of Dayton Hudson in Ontario, California**