

Facility Based Control HMI

Integrate all BloApCo Equipment Components into One Central Control Interface

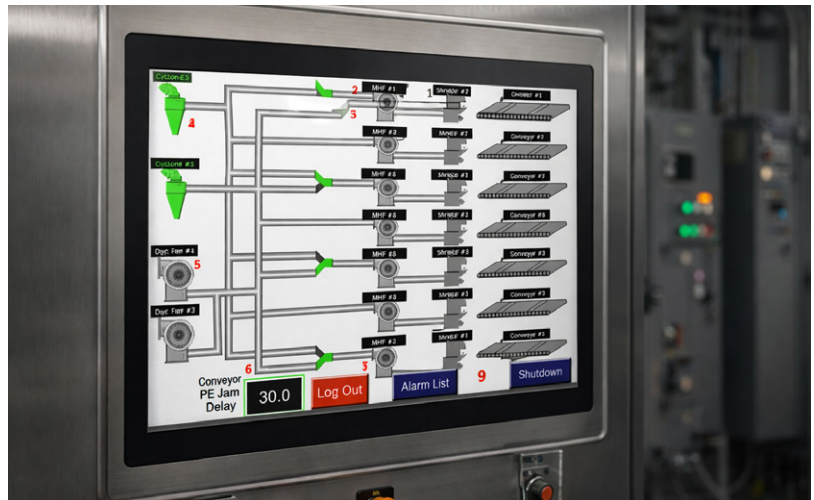


More info here!

Traditional waste-handling systems rely on disconnected equipment with limited visibility. BloApCo's Facility-Based Control (FBC) HMI system transforms operations by unifying every component into a single intelligent platform with real-time monitoring, smart automation and total system control.

The FBC HMI is Engineered to:

- **Automate** material handling processes for greater efficiency
- **Monitor** equipment performance and detect issues early
- **Scale** easily as your facility's needs grow
- **Integrate** with both new and existing BloApCo systems
- **Develop** software and logic designed for specific applications



Ideal for a Wide Range of Applications

- **Distribution Centers**
- **Industrial Warehouses**
- **Corrugated and Paper Plants**
- **Converting and Flexible Packaging Operations**

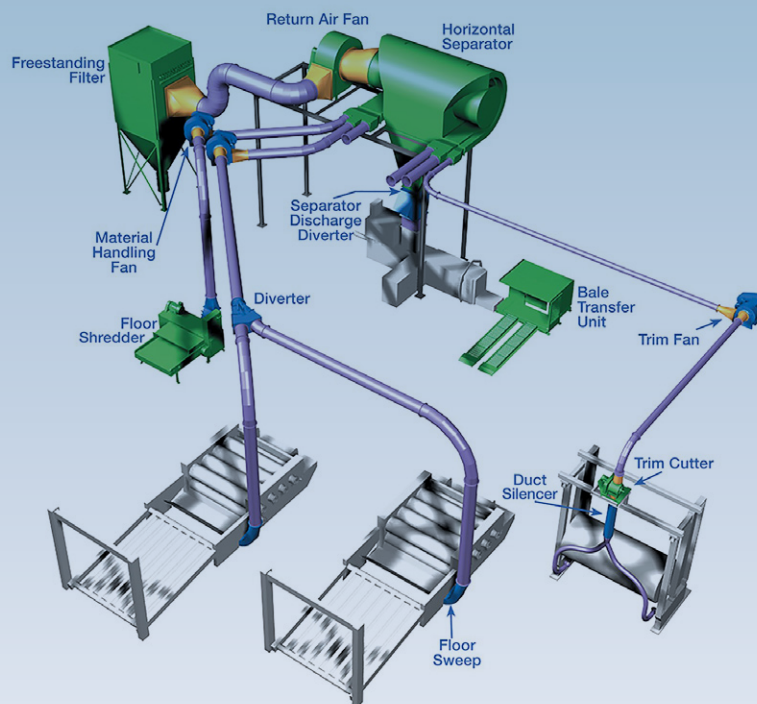


Seamless System Integration

Connect, Control, and Communicate with:

- Original BloApCo equipment and other OEM devices*
- Shredders, trim cutters, diverters, and pneumatic systems
- Your facility's networked control systems

*Equipment must meet minimum communication requirements



The Results

- Reduced downtime
- Improved system visibility and performance
- Enhanced energy efficiency and throughput
- Long-term operational and maintenance cost savings

System Features

ITEM	SPECIFICATION
Control Software	DC8
Program Software	Rockwell Studio 500 FactoryTalk View
MCC (Master Control Cabinet) specs	-phase, 60 Hz, 4380 VAC 1200 A main CB
PLM (Programmable Logic Controller)	Allen Bradley

ITEM	SPECIFICATION
OIT (Operator Interface Terminal)	10" PanelView Touchscreen
Communications	RJ45 Ethernet
MCC (Master Control Cabinet) specs	-phase, 60 Hz, 4380 VAC 1200 A main CB
Digital I/O	Inputs: 32+8+8 channels Outputs: 16+8+8 channels



254-3/2026