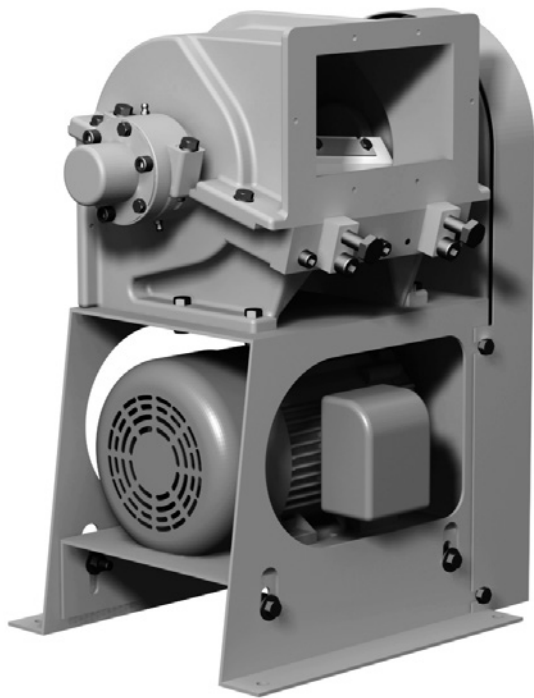


TRIM CUTTER

Model 7-6

For more information about this model, see Bulletin 991.



SHEAR-CUT ACTION FOR PAPER AND TOUGH, THIN FILM AND FOIL

Top Performance

Model 7-6 offers proven BloApCo design with new, innovative maintenance and operating features to achieve higher performance and economy. Driven by a 1 hp electric motor, the 7-6 is capable of accurately and consistently cutting films as thin as 0.001". Varied knife profiles make short work of light paper, plastic film and foil trim up to 7.5" (191 mm) wide. Wear-resistant HCHC, NEOR and carbide knives can be arrayed to match slitting equipment, reducing multiple ribbons of trim, depending on weight and thickness, for pneumatic conveying, baling, disposal or recycling.

Precise Operation

Cutting with one stationary bed knife and two rotating knives, the 7-6 makes two cuts per revolution at speeds from 500 to 3,600 rpm, and passes 1,000 cfm of air at a static pressure loss of 2.0" wg. The split-housing feature permits easy access to the cutting blades, permitting quick removal for sharpening and "in-body" rotor grinding. Class "O" tapered roller bearings eliminate endplay and runout problems, while the open rotor design allows fast, free flow of cut material through the cutter housing.

Easy Installation

Installation of a Model 7-6 trim cutter is quick and simple: The cutter is factory-tested, tailored to your application, and shipped completely assembled and ready to run.

CAPABILITIES

Materials

Paper, plastic film and foil trim

Trim Width max

7.5" (191 mm)

Caliper Range

1 mil to 20 mil
0.001" to 0.02000"
0.0254 mm to 0.508 mm

Air Capacity

1,000 cfm 1,700 m³/hr

Static Pressure Loss

2.0" wg @ 5,000 fpm air velocity

Drive

V-Belt or Direct Drive

Cutting Action

Shear

Rotor speed

500 to 3,600 rpm

Weight

135 lbs (61 kg) with motor

Dimensions

L x W x H: 17" x 13¹/₄" x 22¹/₂"
(431.8 mm x 336.5 mm x 571.5 mm)

FEATURES

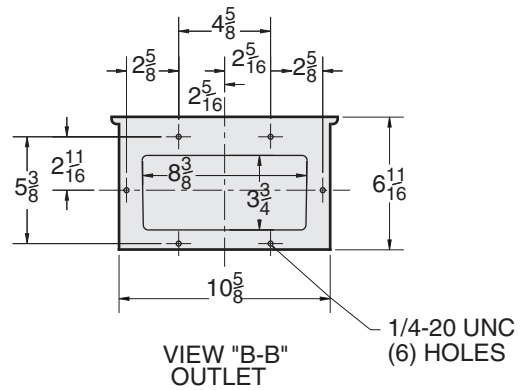
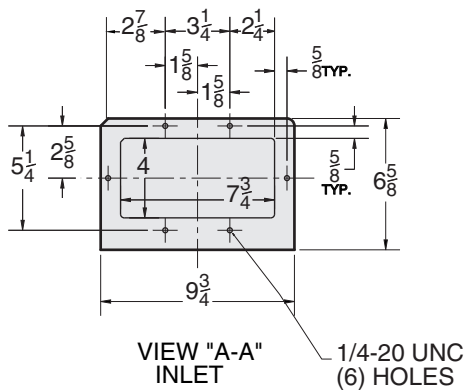
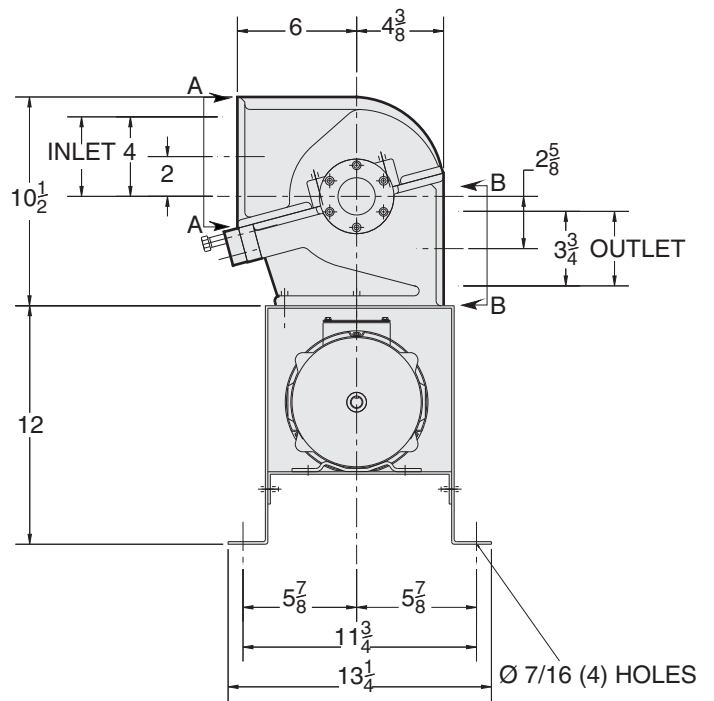
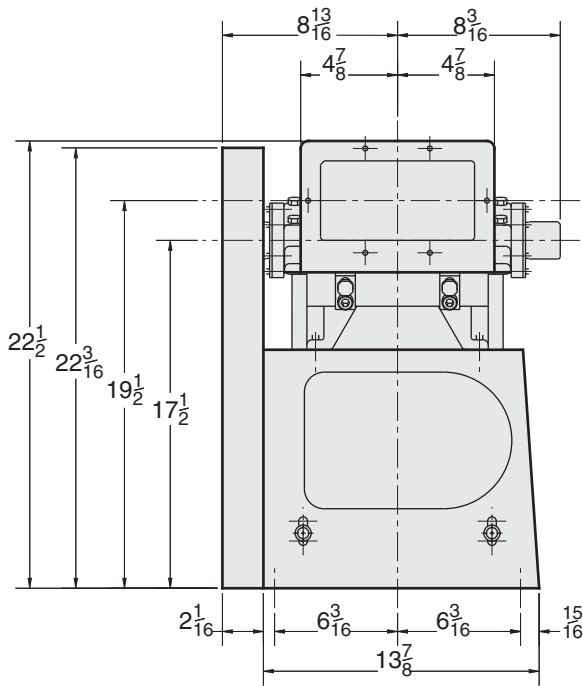
- Fast, easy setup
- Multiple knives: HCHC, NEOR, carbide-edge
- Class "O" tapered roller bearings eliminate endplay and runout
- Rotor shaft supported by tapered roller bearings maintains rotor stability for long life
- Open-rotor design facilitates free passage of air and material
- Multiple mounting and drive arrangements
- Multiple flanged inlet positions, with flanged outlet
- 1 hp 3/60/460 volt TEFC motor is standard

OPTIONS

- Oil mist unit
- Gear motor drive
- Safety disconnect switch
- Tandem rail mounting with BloApCo material-handling fan

Dimensions

Model 7-6



For more information about this model, see Bulletin 991

Revised 201403



Blower Application Company

N114 W 19125 Clinton Drive • P.O. Box 279 • Germantown, WI 53022-0279 • 800.959.0880 • 262.255.5580 • FAX: 262.255.3446 • bac@bloapco.com • bloapco.com